

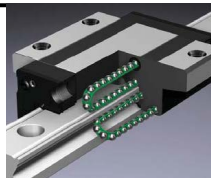
RODLESS BELT-DRIVE ACTUATOR W/ PROFILED RAIL

MXB-P

Designed for applications requiring moderate to heavy load carrying and guidance, the MXB-P actuator features a profiled rail system with recirculating ball linear guides for optimal performance. The MXB-P features speeds up to 3810 mm/sec (150 in/sec) and thrusts up to 1859N (418 lbf). Built-to-order in stroke lengths up to 5080 mm (200 in).

RECIRCULATING BALL BEARINGS

High precision recirculating ball bearings allow smooth, high speed operation and permit large moment loads



BELT TENSIONING SYSTEM

The open slot on the guide plate permits easy access to the belt tensioning screw. No disassembly required

OVERSIZED PULLEY BEARINGS

Drive shaft assembly incorporates oversized shielded/sealed ball bearings for long life and high speeds

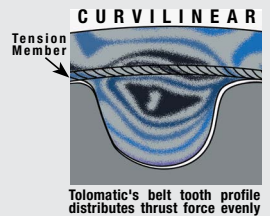
YOUR MOTOR HERE

YOU CAN CHOOSE:

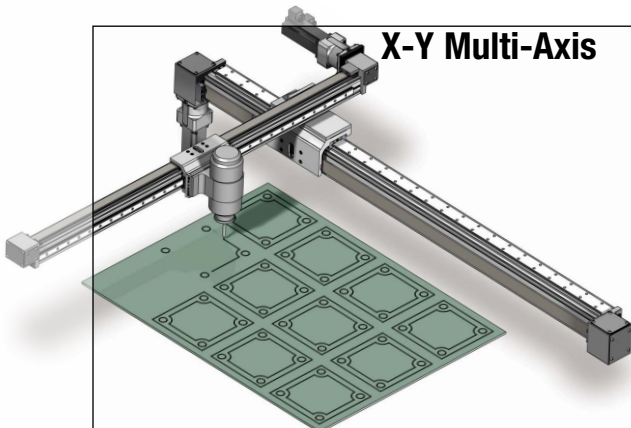
- Choose ACSI (Integrated servo motor/ drive) for a complete motion solution tested and assembled at the factory
- Specify the device to be installed and actuator ships with proper mounting hardware

STEEL REINFORCED/ HTD BELT PROFILE

Belt of polyurethane material reinforced with steel tension members to produce high carrier thrusts without belt stretch.



X-Y Multi-Axis



Applications:

- Adhesive dispensing
- Aligning
- Animation
- Assembly
- Automotive
- Camera positioning
- Conveyors
- Cutting
- Diverters
- Inspection
- Laser marking
- Material cutting
- Milling
- Packaging equipment
- Parts transfer
- Pick & place
- Positioning
- Product handling
- Slitting
- Sorting
- Spraying
- Stacking
- Table positioning
- Test stations
- Wire winding

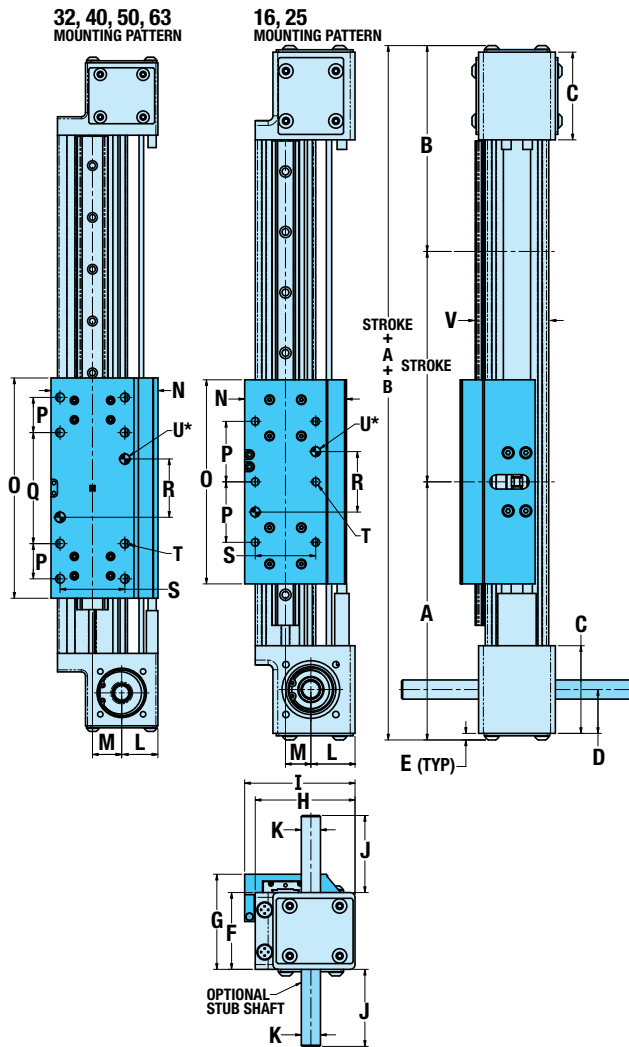
Available Options:

Mounting
Mounting Plates,
Tube Clamps,

Sensors
With integrated
mounting

RODLESS BELT-DRIVE ACTUATOR W/ PROFILED RAIL

Dimensions



	MXB16	MXB25	MXB32	MXB40	MXB50	MXB63
A	135.3	173.9	187.8	216.6	224.7	275.1
B	119.0	139.3	154.7	192.7	205.0	262.1
C	50.8	58.0	55.9	78.7	82.6	96.1

Measurements in mm

Specifications

MXB-P

MXB SIZE	MAX. THRUST N	BELT DEAD LENGTH mm	MAXIMUM STROKE** mm
16	169	363.0	5842
25	672	475.5	5181
32	930	556.0	5156
40	1112	633.7	5130
50	1446	692.2	5130
63	1859	917.2	2590

SIZE	MAX. BENDING MOMENTS			MAX. LOAD
	Mx N-m	My N-m	Mz N-m	Fy & Fz N
16	4.5	38.3	38.3	966
25	14.3	56.7	42.6	1,996
32	25.6	152.0	152.0	2,531
40	68.2	216.0	216.0	3,274
50	91.7	394.0	394.0	4,510
63	115.0	603.0	603.0	5,745

Max. Velocity 3810 mm/sec

Repeatability ± 0.051 mm

Temp. Range -12 to 54 °C

**Longer stroke length available, up to 40 feet (12.2m), contact Tolomatic

	MXB16	MXB25	MXB32	MXB40	MXB50	MXB63
D	25.4	29.0	25.4	39.4	40.0	45.3
E	3.8	4.4	4.4	4.4	4.4	4.4
F	44.5	50.8	69.9	82.6	98.4	111.1
G	53.2	62.9	84.6	98.7	129.6	145.6
H	52.8	66.0	77.5	93.8	110.6	139.3
I	54.8	73.0	82.5	103.9	117.9	147.1
J(LMI)	15.0	57.7	57.7	47.5	47.5	47.5
J(RP)	46.6	57.7	57.7	47.5	47.5	47.5
K	Ø9.53	Ø12.70	Ø12.70	Ø12.70	Ø12.70	Ø12.70
L	26.4	29.2	27.9	39.7	41.5	52.2
M	11.4	16.8	22.6	22.2	29.8	37.1
N	45.3	67.4	82.5	97.8	117.4	150.6
O	110.0	135.0	170.0	200.0	216.0	304.8
P	40.0	40.0	27.1	25.4	25.4	40.0
Q	—	—	85.7	114.3	69.8	130.0
R	40.00	40.00	45.00	63.50	38.10	65.00
S	28.00	40.00	50.00	72.00	79.38	98.30
T	M4x0.7 Ø4.045 / 4.020	M6x1.0 Ø6.045 / 6.020	M8x1.25 Ø8.045 / 8.020	M8x1.25 Ø8.045 / 8.020	M8x1.25 Ø8.045 / 8.020	M10x1.5 Ø10.045 / 10.020
U	▽6.35	▽6.35	▽9.53	▽12.70	▽12.70	▽12.70
V	30.00	40.00	54.00	64.00	78.74	100.00



MADE IN U.S.A.

TolomaticTM
EXCELLENCE IN MOTION

COMPANY WITH
QUALITY SYSTEM
CERTIFIED BY DNV
= ISO 9001 =
Certified site: Hamel, MN

USA - Headquarters

Tolomatic Inc.
3800 County Road 116
Hamel, MN 55340, USA
Phone: (763) 478-8000
Toll-Free: **1-800-328-2174**
sales@tolomatic.com
www.tolomatic.com

MEXICO

Centro de Servicio
Parque Tecnológico Innovación
Int. 23, Lateral Estatal 431,
Santiago de Querétaro,
El Marqués, México, C.P. 76246
Phone: +1 (763) 478-8000
help@tolomatic.com

EUROPE

Tolomatic Europe GmbH
Elisabethenstr. 20
65428 Rüsselsheim
Germany
Phone: +49 6142 17604-0
help@tolomatic.eu
www.tolomatic.com/de-de

CHINA

**Tolomatic Automation Products
(Suzhou) Co. Ltd.**
No. 60 Chuangye Street, Building 2
Huqiu District, SND Suzhou
Jiangsu 215011 - P.R. China
Phone: +86 (512) 6750-8506
TolomaticChina@tolomatic.com

All brand and product names are trademarks or registered trademarks of their respective owners. Information in this document is believed accurate at time of printing. However, Tolomatic assumes no responsibility for its use or for any errors

that may appear in this document. Tolomatic reserves the right to change the design or operation of the equipment described herein and any associated motion products without notice. Information in this document is subject to change without notice.

Visit www.tolomatic.com for the most up-to-date technical information