

Need an actuator fast?

Fixed stroke RSA32ST rod style industrial actuators with inline mounts (LMI) available in one week!



- Ideal for hydraulic and pneumatic replacement
- Can be used for a variety of general motion control applications that include pressing, lifting, pulling or positioning

| Quick Ship Actuators | | | | |
|-----------------------------|-------------|----------------|-------------------|------------------------|
| Configuration String | Part Number | Stroke Length* | Max Thrust | Speed |
| RSA32 BN02 SK6.000 LMI ST1 | 1132-0864 | 6" (152 mm) | 534 lbf (2,375 N) | 34 in/sec (850 mm/sec) |
| RSA32 BN02 SK12.000 LMI ST1 | 1132-0865 | 12" (305 mm) | 534 lbf (2,375 N) | 34 in/sec (850 mm/sec) |
| RSA32 BN05 SK6.000 LMI ST1 | 1132-0866 | 6" (152 mm) | 950 lbf (4,226 N) | 13 in/sec (330 mm/sec) |
| RSA32 BN05 SK12.000 LMI ST1 | 1132-0867 | 12" (305 mm) | 950 lbf (4,226 N) | 13 in/sec (330 mm/sec) |

*Actual usable stroke length should include space for over-travel

- Motor mounts ordered as a separate line item
- Accessories like switches and rod ends purchased as separate line items
- Contact your Tolomatic sales team with questions and to check availability as inventory is limited
- For full specifications: [RSA Catalog](#)
- For ordering from our full line of stroke configurable actuators, please visit www.tolomatic.com

Online engineering tools to support from design to production

Engineering Tools on www.tolomatic.com



EDUCATIONAL
RESOURCES



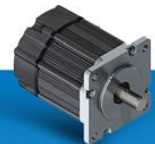
CONTACT AN
ENGINEER



ACTUATOR
SIZING



3D
CAD
CAD
LIBRARY



YOUR MOTOR
HERE®