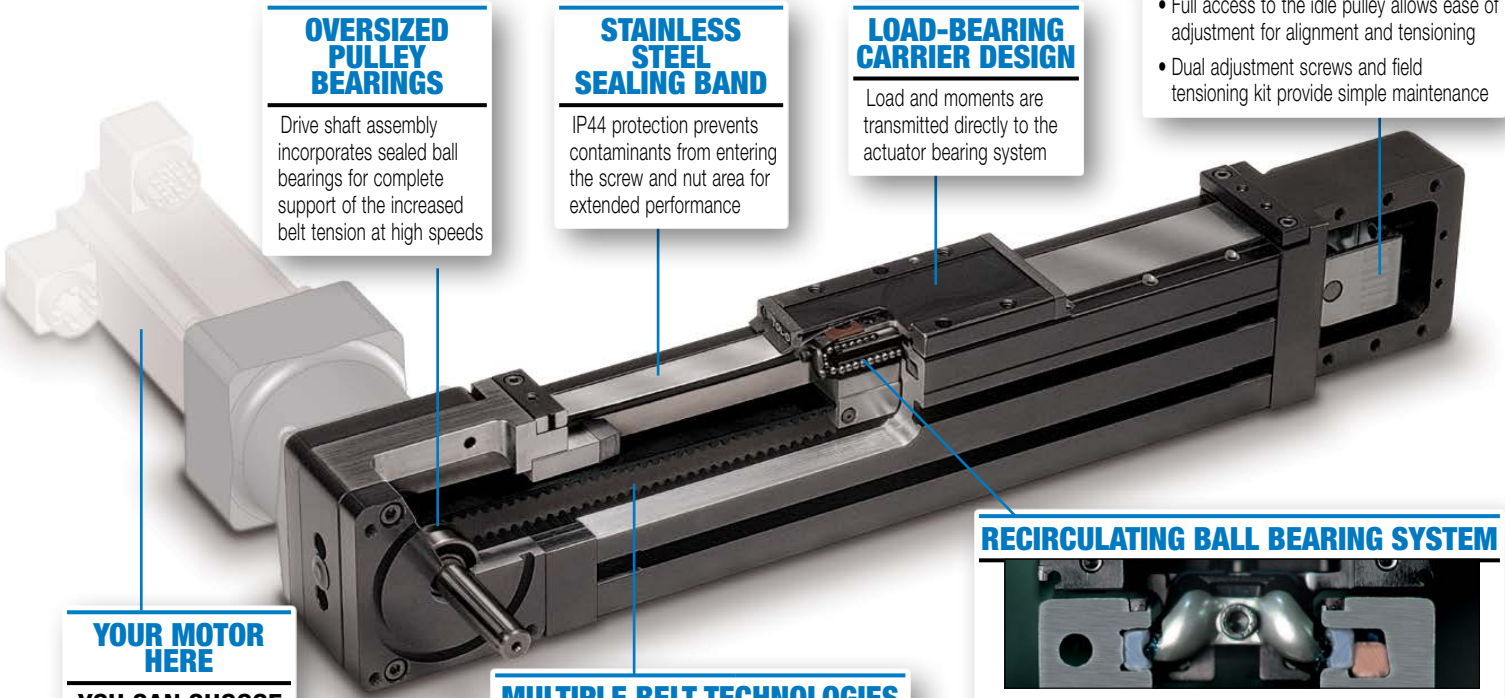


RODLESS BELT-DRIVE ELECTRIC ACTUATOR B3W

With large bending moment capacity, the B3W utilizes an integral recirculating ball bearing guidance system that provides durable performance and extremely long life.



OVERSIZED PULLEY BEARINGS

Drive shaft assembly incorporates sealed ball bearings for complete support of the increased belt tension at high speeds

STAINLESS STEEL SEALING BAND

IP44 protection prevents contaminants from entering the screw and nut area for extended performance

LOAD-BEARING CARRIER DESIGN

Load and moments are transmitted directly to the actuator bearing system

BELT TENSIONING SYSTEM

- Full access to the idle pulley allows ease of adjustment for alignment and tensioning
- Dual adjustment screws and field tensioning kit provide simple maintenance

YOUR MOTOR HERE

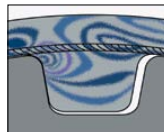
YOU CAN CHOOSE:

- Specify the motor to be installed and actuators with proper mounting hardware
- Specify and ship your motor to Tolomatic for factory installation
- Motor or gearbox supplied and installed by Tolomatic
- Direct or reduction drive mounting

MULTIPLE BELT TECHNOLOGIES

YOU CAN CHOOSE:

- Polyurethane steel-cord reinforced HTD style belt (standard)
- Polyurethane Kevlar reinforced HTD style belt



RECIRCULATING BALL BEARING SYSTEM



- Unique design incorporates hardened steel raceways integral to the aluminum extrusion providing optimum preload and smooth performance
- Recirculating ball bearing system provides guidance, high efficiency and durability

Available Options:

Carrier Options

Auxiliary Carrier; Dual 180° Carrier

Mounting Options

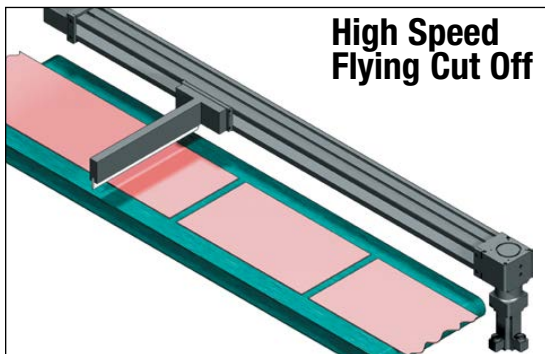
Surface Mount; Tube Supports; Mounting Plates

Metric Option

Provides metric tapped holes

Sensors

With integrated mounting bracket



High Speed Flying Cut Off

Applications:

- Adhesive dispensing
- Aligning
- Animation
- Assembly
- Automotive
- Camera positioning
- Conveyors
- Cutting
- Diverters
- Inspection
- Laser marking
- Material cutting
- Milling
- Packaging equipment
- Parts transfer
- Pick & place
- Positioning
- Product handling
- Slitting
- Sorting
- Spraying
- Stacking
- Table positioning
- Test stations
- Wire winding
- X-Y Gantry/ Multi-Axis

RODLESS BELT-DRIVE ELECTRIC ACTUATOR

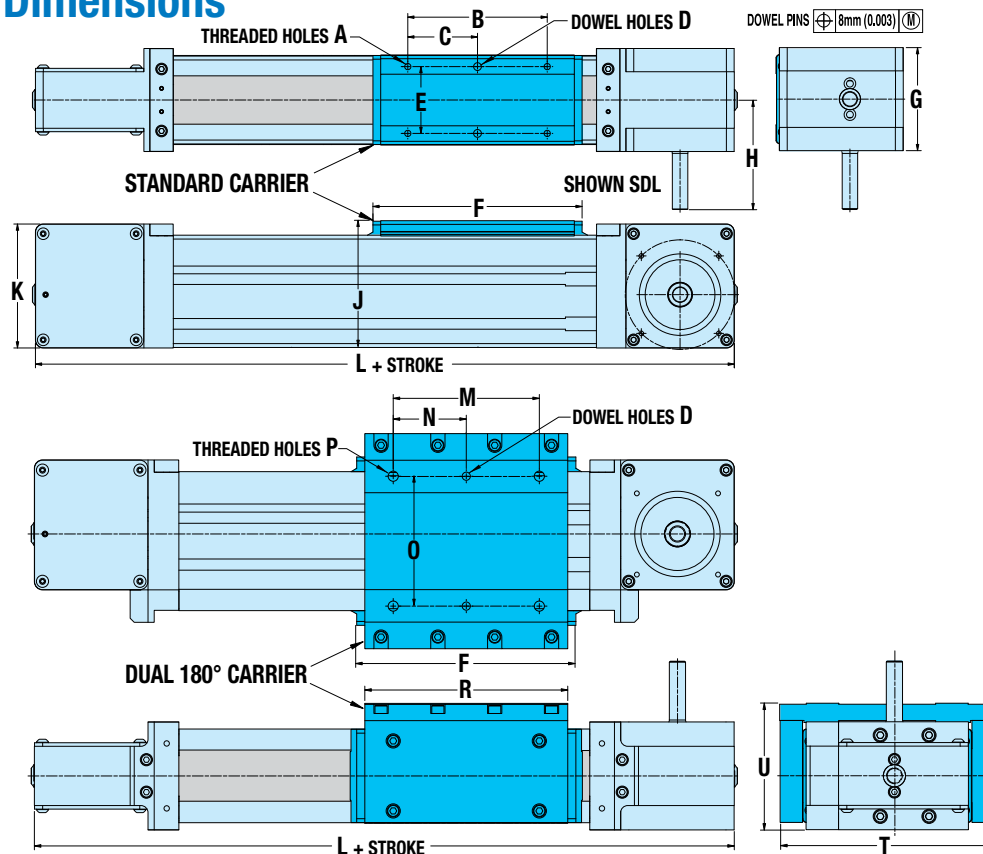
SPECIFICATIONS

B3W

CARRIER	SIZE	MAXIMUM BENDING MOMENTS						MAX. LOAD				MAX. THRUST		MAX. STROKE	
		MX		MY		MZ		FY		FZ		N	LBF	MM	IN
		N-M	IN-LBS	N-M	IN-LBS	N-M	IN-LBS	N	LB	N	LB				
Standard	10	28.2	250	30.4	269	17.6	156	1,517	341	2,629	591	667	150	10,465	412
	15	97	859	117	1,033	67	596	3,737	840	6,468	1,454	1,112	250	10,566	416
	20	188	1,662	166	1,472	96	850	5,155	1,159	8,932	2,008	1,440	325	8,128	320
Dual 180°	10	74	657	35.3	312	61	538	5,258	1,182	3,034	682	667	150	10,465	412
	15	279	2,468	135	1,192	233	2,066	12,935	2,908	7,473	1,680	1,112	250	10,566	416
	20	512	4,527	192	1,700	333	2,944	17,864	4,016	10,311	2,318	1,440	325	8,128	320

NOTE: Auxiliary Carrier option increases maximum bending moments and load, see B3 brochure 3600-4176 for complete details.

Dimensions



	10	15	20
A	M6-1.0 9.4 DP	M6-1.0 10.2 DP	M8-1.25 14.2 DP
B	57.15	114.3	120.65
C	28.58	57.15	60.33
D	6.045/ 6.020 6.4 DP	6.045/ 6.020 6.4 DP	6.045/ 6.020 6.4 DP
E	45.24	54.76	79.30
F	103.6	171.5	184.1
G	57.2	73.0	107.9
H	76.1	89.7	98.3
J	82.0	104.3	117.9
K	79.4	101.6	114.3
L	316.2	420.2	431.6
M	77.77	114.30	152.40
N	38.89	57.15	76.20
O	82.55	101.60	136.53
P	M6-1.0 6.4 DP	M8-1.25 15.0 DP	M10-1.5 16.8 DP
R	93.3	158.8	171.5
T	131.1	168.3	192.8
U	72.6	99.0	119.5

Dimensions in millimeters
For reference only. Use CAD files for
any critical dimensions



MADE IN U.S.A.

Tolomatic™

EXCELLENCE IN MOTION

COMPANY WITH
QUALITY SYSTEM
CERTIFIED BY DNV
= ISO 9001 =
Certified site: Hamel, MN

USA - Headquarters

Tolomatic Inc.
3800 County Road 116
Hamel, MN 55340, USA
Phone: (763) 478-8000
Toll-Free: **1-800-328-2174**
sales@tolomatic.com
www.tolomatic.com

MEXICO

Centro de Servicio
Parque Tecnológico Innovación
Int. 23, Lateral Estatal 431,
Santiago de Querétaro,
El Marqués, México, C.P. 76246
Phone: +1 (763) 478-8000
help@tolomatic.com

EUROPE

Tolomatic Europe GmbH
Elisabethenstr. 20
65428 Rüsselsheim
Germany
Phone: +49 6142 17604-0
help@tolomatic.eu
www.tolomatic.com/de-de

CHINA

**Tolomatic Automation Products
(Suzhou) Co. Ltd.**
No. 60 Chuangye Street, Building 2
Huqiu District, SND Suzhou
Jiangsu 215011 - P.R. China
Phone: +86 (512) 6750-8506
Tolomatic_China@tolomatic.com

All brand and product names are trademarks or registered trademarks of their respective owners. Information in this document is believed accurate at time of printing. However, Tolomatic assumes no responsibility for its use or for any errors

that may appear in this document. Tolomatic reserves the right to change the design or operation of the equipment described herein and any associated motion products without notice. Information in this document is subject to change without notice.

Visit www.tolomatic.com for the most up-to-date technical information