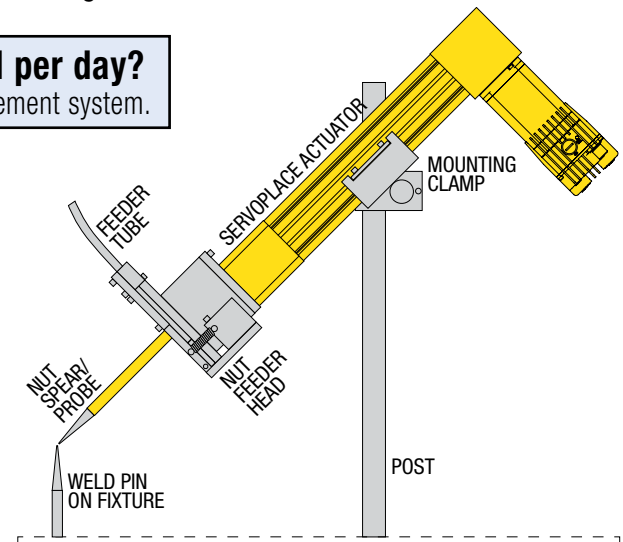
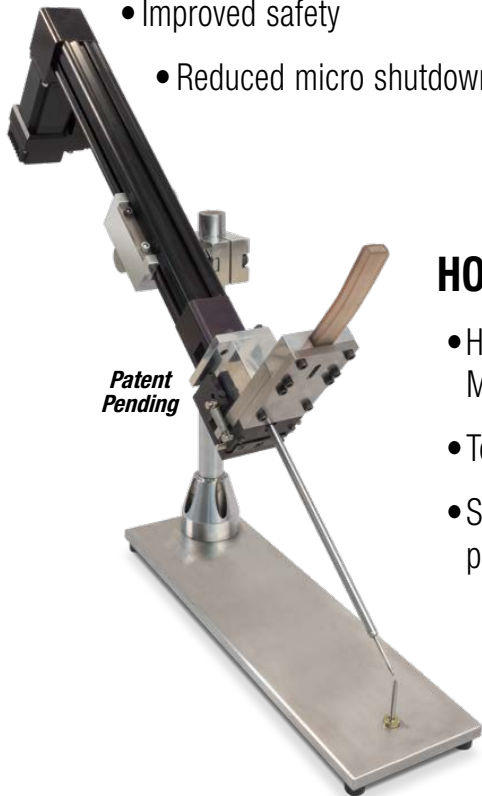


## SERVOPLACE™ PRECISION NUT PLACEMENT ACTUATOR

*Precision fastener placement for projection and stud welding*

**Have you counted the number of nuts dropped per day?**  
They indicate the failure rate of your current pneumatic nut placement system.

- ServoPlace reduces system failures to near zero, increasing productivity and component quality
- ROI within weeks
- Decreased welding cycle times by as much as 20% for increased throughput
- Improved safety
- Reduced micro shutdowns



**SERVOPLACE IN A TYPICAL NUT PLACEMENT SYSTEM**

### HOW IT WORKS

- High Speed Electric Rod-Style Actuator + ACSI Integrated Servo Motor/Drive/Controller
- Total package matched for optimal performance
- ServoPlace™ provides feedback to the weld cell controller to improve process control, minimize component wear and prevent damage
  - No minimum or maximum install angle required. Accurate performance even when mounted vertically
  - Adapts to your preferred nut placing head

Application Challenges with Pneumatic Cylinders	Advantages with ServoPlace™
Limited control and inconsistent air flow	Significant improvements in accuracy and repeatability with "smart" servo-electric motion control (accel, decel, velocity +)
Time consuming setup and changeover with pneumatic flow controls	Simple setup and change-over with programmable electric system: pneumatic mode servo or through PLC via Ethernet plug and play
Dedicated units often required for various fastener sizes	Multiple size nuts can be placed by the same actuator with minimal programming
Inevitable leaks in pneumatic components reduce system performance and cause costly downtime	Longer life, consistent performance. Tested for millions of cycles with no maintenance required

# SERVOPLACE™ PRECISION NUT PLACEMENT ACTUATOR

## FLEXIBLE CONTROL FOR ANY PLC

- Ethernet: EtherNet/IP, Profinet, Modbus TCP, EtherCAT
- Pneumatic Logic with discrete I/O

## INTEGRATED SERVO MOTOR/ DRIVE/CONTROLLER

- IP65 ingress protection
- M12 connectors
- Dual Ethernet ports



## MOTOR ORIENTATION

- Direct drive option couples the driving shaft and is typically a one-piece housing construction for optimum alignment and support of the motor

## STEEL THRUST ROD

- Case hardened steel thrust rod for high rigidity and corrosion resistance

## OVERSIZED PULLEY BEARINGS

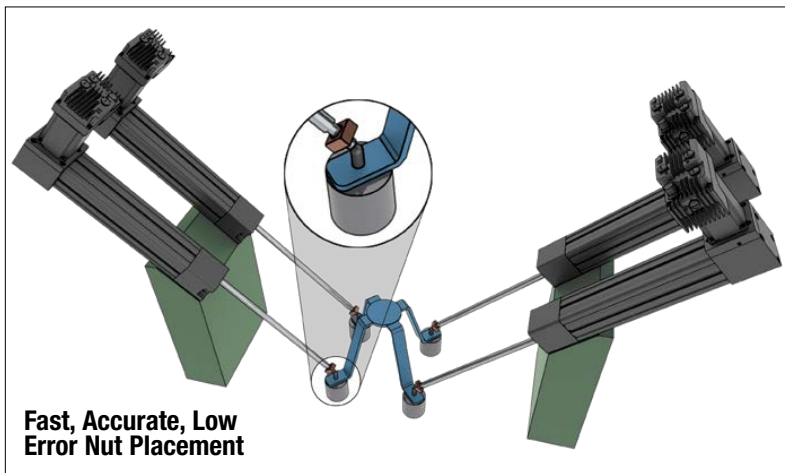
- Drive shaft assembly incorporates sealed ball bearings for complete support of the increased belt tension at high speeds

## LIGHTWEIGHT ALUMINUM DESIGN

- Black anodized extrusion design is optimized for rigidity and strength
- External switch channels on all sides allow easy placement of position indicating switches

Patent Pending

SPEEDS UP TO 5 M/S  
(200 IN/SEC)

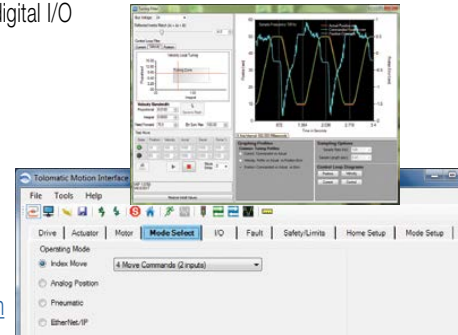


Fast, Accurate, Low Error Nut Placement

## (TMI) Tolomatic Motion Interface: Easy to Use Operating Modes & Configuration Software

- Index position via digital I/O
- Pneumatic Logic
- Analog Position
- Ethernet
  - EtherNet/IP
  - PROFINET
  - Modbus TCP
  - EtherCAT

• Free download at [www.tolomatic.com](http://www.tolomatic.com)



**Tolomatic**™  
EXCELLENCE IN MOTION

COMPANY WITH  
QUALITY SYSTEM  
CERTIFIED BY DNV GL  
= ISO 9001 =  
Certified site: Hamel, MN

### USA

**Tolomatic Inc.**  
3800 County Road 116  
Hamel, MN 55340, USA  
**Phone:** (763) 478-8000  
**Fax:** (763) 478-8080  
Toll-Free: **1-800-328-2174**  
sales@tolomatic.com  
[www.tolomatic.com](http://www.tolomatic.com)

### CHINA

**Tolomatic Automation Products (Suzhou) Co. Ltd.**  
(ServoWeld® inquiries only)  
No. 60 Chuangye Street, Building 2  
Huqiu District, SND Suzhou  
Jiangsu 215011 - P.R. China  
**Phone:** +86 (512) 6750-8506  
**Fax:** +86 (512) 6750-8507  
ServoWeldChina@tolomatic.com

### EUROPE

**Tolomatic Europe GmbH**  
Elisabethenstr. 20  
65428 Rüsselsheim  
Germany  
**Phone:** +49 6142 17604-0  
help@tolomatic.eu

All brand and product names are trademarks or registered trademarks of their respective owners. Information in this document is believed accurate at time of printing. However, Tolomatic assumes no responsibility for its use or for any errors

that may appear in this document. Tolomatic reserves the right to change the design or operation of the equipment described herein and any associated motion products without notice. Information in this document is subject to change without notice.

Visit [www.tolomatic.com](http://www.tolomatic.com) for the most up-to-date technical information