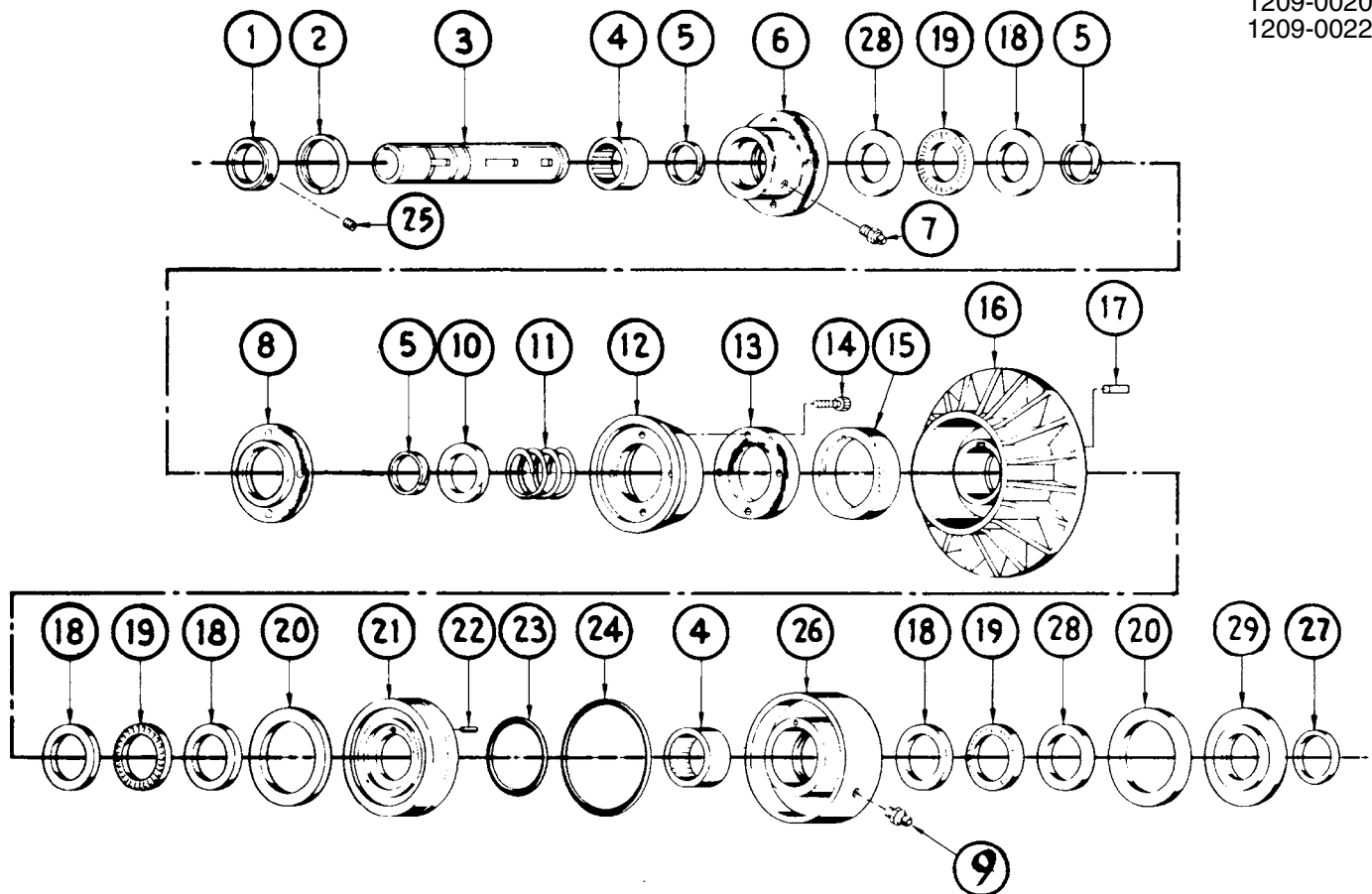


# 1209C Disc/Cone Clutch

 Models: 1209-0016  
 1209-0018  
 1209-0020  
 1209-0022


## Parts Listing

ITEM	PART NO.	DESCRIPTION	Quantity			
			1209-0016	1209-0018	1209-0020	1209-0022
1	1209-1013	Collar				1
2	1209-1016	Retaining Ring	1	1	1	1
3	1209-1024	Shaft, 1" Bore	1			
	1209-1022	Shaft, 1-1/8" Bore		1		
	1209-1020	Shaft, 1-1/4" Bore			1	
	1209-1000	Shaft, 1-3/8" Bore				1
4	1309-1017	Needle Bearing	1	1	1	1
5	1309-1011	Retaining Ring	2	2	2	2
6	1209-1018	Adapter	1	1	1	1
7	0100-1601	Zerk Grease Fitting	1	1	1	1
8	1209-1002	Cone, Adapter	1	1	1	1
9	1208-1034	Zerk Grease Fitting	1	1	1	1
10	1209-1008	Washer	1	1	1	1
11	1209-1009	Compression Spring	1	1	1	1
12	1209-1003	Clutch Cone	1	1	1	1
13	1309-2007	Clutch Ring Adapter	1	1	1	1
14	1209-1019	Soc. Hd. Cap Screw	4	4	4	4

ITEM	PART NO.	DESCRIPTION	Quantity			
			1209-0016	1209-0018	1209-0020	1209-0022
15	1309-2003	Felt Retaining Seal	1	1	1	1
16	1209-1004	Cup	1	1	1	1
17	1309-1010	Key	1	1	1	1
18	1309-1020	Thrust Race Washer	4	4	4	4
19	1309-1018	Thrust Bearing	3	3	3	3
20	1209-1010	Felt Seal	2	2	2	2
21	1209-1005	Piston	1	1	1	1
22	1209-1017	Spring Pin	1	1	1	1
23	1209-1015	O-Ring	1	1	1	1
24	1029-1033	O-Ring	1	1	1	1
25	1303-1174	Set Screw	2	2	2	
	1308-1013	Set Screw				2
26	1209-1006	Clutch Cylinder	1	1	1	1
27	1209-1060	Retaining Ring	1	1	1	1
28	1309-2019	Thrust Race Washer	2	2	2	2
30	1209-1007	Felt Seal Washer	1	1	1	1

## Installation

1. Slip the clutch over the shaft to the desired position, align with keyway and insert key (#17). After final alignment with mating sprocket or sheave, tighten set screws (#25) to lock clutch in place.
2. Connect air or hydraulic source not exceeding 100 psi (7 bars) pressure to cylinder port. Make sure no side or end thrust is transmitted to clutch. Flexible hose (**not plastic tubing**) may be used. A restraining member may be necessary to prevent cylinder rotation.

## Maintenance

- Lubrication will be required after every four (4) weeks of operation. Use a lubricant such as Mobilith® SHC 460 or equivalent. Two zerk fittings are provided for this purpose.
- After long periods of operation, it may be necessary to disassemble the clutch for cleaning and inspection.

**⚠ CAUTION! CLUTCHES ARE UNDER SPRING TENSION. USE CARE WHEN DIS-ASSEMBLING.**

### To Disassemble:

1. Remove the retaining ring (#27) from the cylinder end of the clutch shaft and slide all parts off this end.
2. Assemble all parts onto the shaft from the opposite end. This procedure is necessary to keep from damaging the edges of the bearing seal lips. See exploded view on the other side for proper sequence of assembly.
3. Wipe off all of the old lubricant before applying fresh grease. Use Mobilith® SHC 460 or equivalent. If it is necessary to remove the piston from the cylinder, re-lubricate the O-rings with a mineral-based O-ring grease. Also remove any grease that may have contacted the cone and clean out any foreign material in the cup. Be careful not to re-contaminate any internal parts.

Mobilith® SHC 460 is a registered trademark of Exxon Mobil Corporation, [www.mobil.com](http://www.mobil.com)



3800 County Road 116, Hamel, MN 55340  
<http://www.Tolomatic.com> • Email: [Help@Tolomatic.com](mailto:Help@Tolomatic.com)  
Phone: (763) 478-8000 • Fax: (763) 478-8080 • Toll Free: 1-800-328-2174



Information furnished is believed to be accurate and reliable. However, Tolomatic assumes no responsibility for its use or for any errors that may appear in this document. Tolomatic reserves the right to change the design or operation of the equipment described herein and any associated motion products without notice. Information in this document is subject to change without notice.