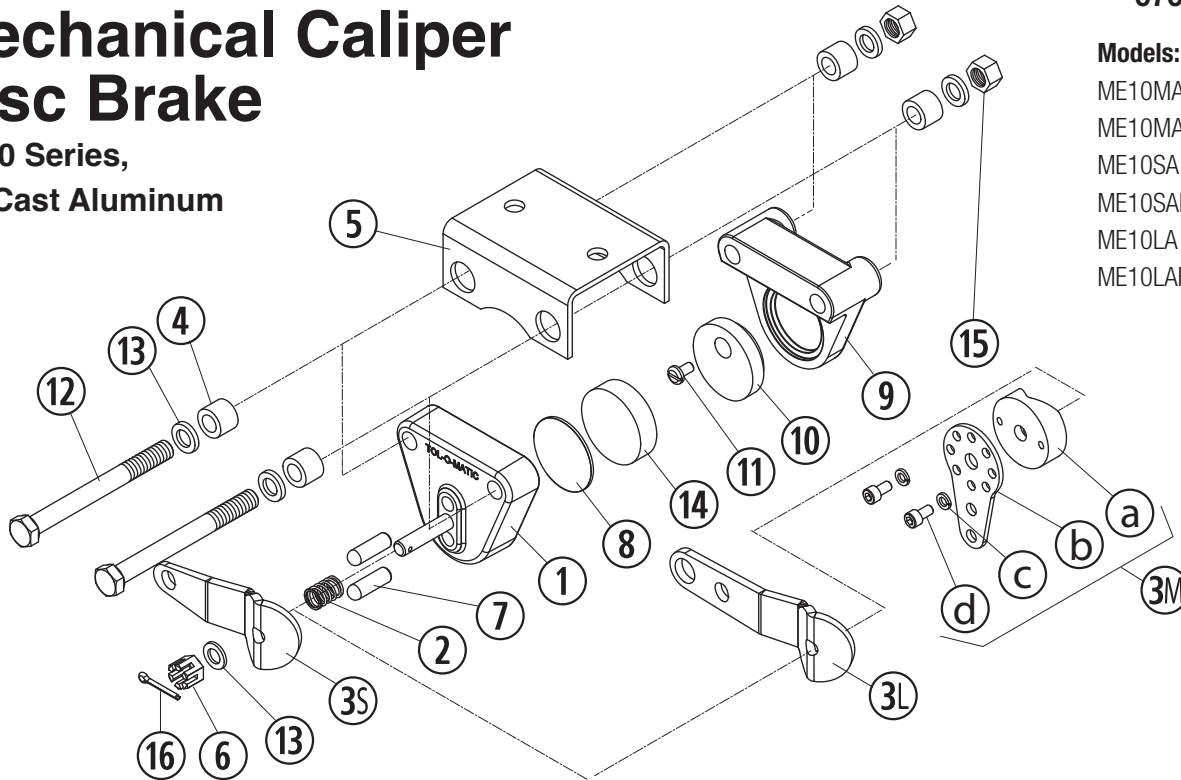


Mechanical Caliper Disc Brake

ME10 Series,
Die Cast Aluminum

Models:

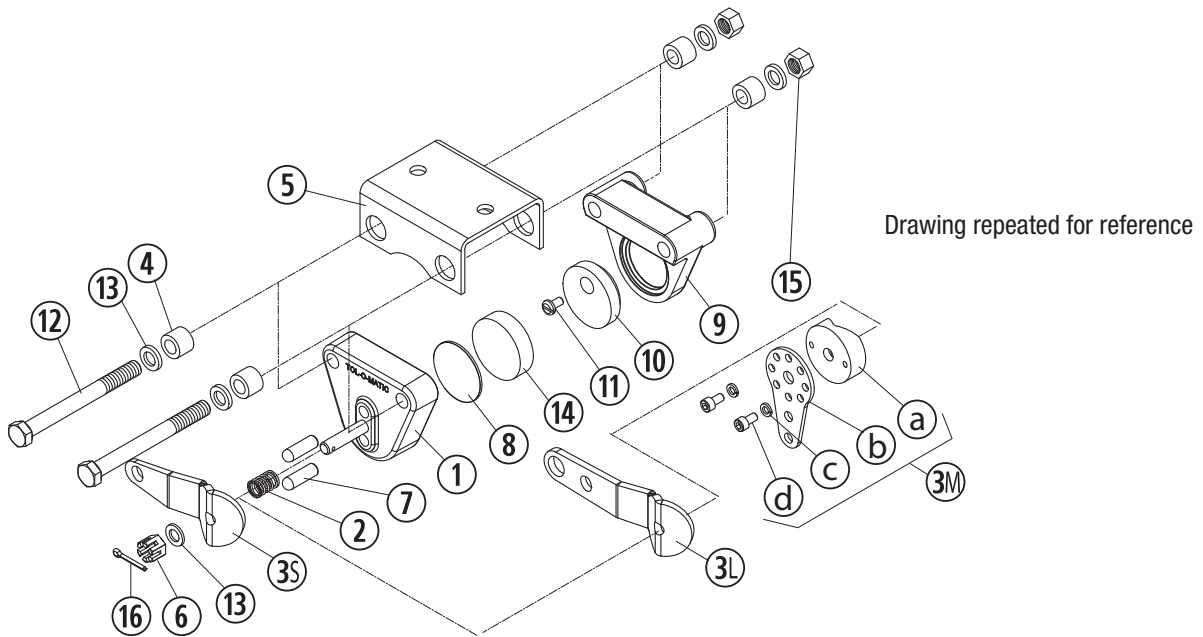
ME10MA	0707-0000
ME10MAF	0707-0001
ME10SA	0732-0000
ME10SAF	0732-0001
ME10LA	0732-0003
ME10LAF	0732-0002



NOTE: This mechanical caliper is not self compensating for wear. It must be adjusted during initial installation and periodically thereafter throughout the Lining's life.

ITEM	PART NO.	DESCRIPTION	ASSEMBLY / MODEL NUMBER					
			0707-0000 / ME10MA	0707-0001 / ME10MAF	0732-0000 / ME10SA	0732-0001 / ME10SAF	0732-0003 / ME10LA	0732-0002 / ME10LAF
1.	0707-1002	Live Side Housing	1	1	1	1	1	1
2.	0707-1004	Compression Spring	1	1	1	1	1	1
3M.	0707-1006	3a. Cam	1	1				
	0707-1007	3b. Lever Arm	1	1				
	0707-1011	3c. Lock Washer #10	2	2				
	0707-1012	3d. Screw	2	2				
3S.	0707-1013	Lever Cam (1.75")		1	1			
3L.	0743-1013	Lever Cam (3.50")				1	1	
4.	0707-1015	Sleeve		4		4		4
5.	0707-1016	Floating Mount Bracket		1		1		1
6.	0707-1008	Nut, Castle	1	1	1	1	1	1
7.	0707-1005	Actuating Pin	2	2	2	2	2	2
8.	0707-1003	Back Plate	1	1	1	1	1	1
9.	0705-1001	Dead Side Housing	1	1	1	1	1	1
10.	0701-1032	Puck, Dead Side	1	1	1	1	1	1
11.	0701-1006	Flat Head Screw	1	1	1	1	1	1
12.	0707-1105	Hex Head Bolt	2		2		2	
	3030-1007	Hex Head Bolt		2		2		2
13.	0701-1007	Flat Washer	5	1	8	3	7	3
14.	0701-1010	Puck, Live Side	1	1	1	1	1	1
15.	0701-1008	Nut, Lock	2	2	2	2	2	2
16.	0743-1048	Pin, Cotter	1	1	1	1	1	1

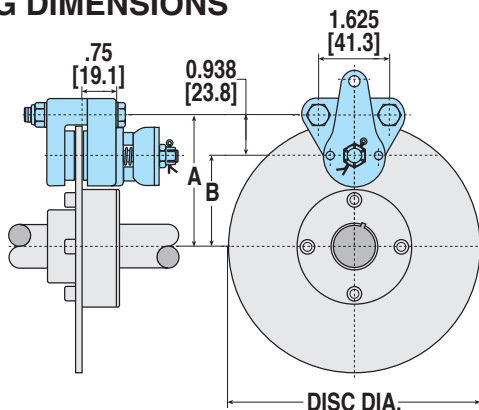
NOTE: Items marked with capital letters are used only in models with those letter suffixes. Model number letter suffixes mean: **A**: indicates the brake is designed for a 5/32" (3.97mm) thick disc; **M**: indicates the brake has a machined cam; **S**: indicates the brake has a short lever arm; **L**: indicates the brake has a long lever arm; **F**: indicates the brake has a Floating Mount Bracket.



1. Disconnect the Brake Lever (#3) from its linkage.
2. Remove the brake or the brake and mounting bracket from its mounting area.
3. Remove the two Hex Head Bolts (#12) and take the two halves of the brake apart.
4. Remove the Flat Head Screw (#11) from the Dead Side Puck (#10) and place it aside. Then, remove both pucks (#10 and #14).
5. Take the Flat Head Screw (#11) and apply Loctite® on its threads. Then, use it to attach the new Dead Side Puck (#10) to the Dead Side Housing (#9), torquing it to 20 in-lbs (2.26 N-m).
6. When reassembling the brake, lubricate the Actuating Pins (#7) with a dry graphite lubricant. Then reinstall the two Hex Head Bolts (#12), with the four Washers (#13) [or Sleeves (#4) and Bracket (#5) for "F" models] and the two Lock Nuts (#15) and torque to 480 in-lbs (54.23 N-m).
7. Mount the brake unit back in its location with two SAE Grade 5 Hex Head Bolts, torquing to 264 in-lbs (29.83 N-m).
8. Care must be taken in mounting the brake to make certain the puck faces are parallel to the disc. The proper clearance between each puck and each side of the disc is 0.010 inch (0.25 mm) to 0.031 inch (0.79 mm).
9. To prevent excessive wear, be certain the disc does not rub against the brake housing or against the pucks while they are in the retracted position.
10. The disc must be free of dirt and grease for maximum life and braking performance.
11. The maximum allowable lever force is 225 lbf (1,000.9 N) for the 3.50" (8.89 cm) long Lever Arm (#3L) and 450 lbf (2,001.7 N) for both of the other levers (#3S & #3M).

Loctite® is a registered trademark of the Loctite Corporation, <http://www.loctite.com>

MOUNTING DIMENSIONS



DISC DIA.		A		B	
in	mm	in	mm	in	mm
6.313	160.3	3.469	88.1	2.539	64.5
8	203.2	4.312	109.5	3.382	85.9
10	254.0	5.312	134.9	4.382	111.3
12	304.8	6.312	160.3	5.382	136.7
16	406.4	8.312	211.12	7.382	187.5



COMPANY WITH
QUALITY SYSTEM
CERTIFIED BY DNV
= ISO 9001 =

3800 County Road 116, Hamel, MN 55340 USA
<http://www.tolomatic.com> • Email: Help@Tolomatic.com
 Phone: (763) 478-8000 • Fax: (763) 478-8080 • Toll Free: 1-800-328-2174

© 2023 Tolomatic 202311021632

All brand and product names are trademarks or registered trademarks of their respective owners. Information in this document is believed accurate at time of printing. However, Tolomatic assumes no responsibility for its use or for any errors that may appear in this document. Tolomatic reserves the right to change the design or operation of the equipment described herein and any associated motion products without notice. Information in this document is subject to change without notice.

Visit www.tolomatic.com for the most up-to-date technical information